

Titan-SV™ LOB



Titan-SV™ LOB offers both fixed site and vehicle mounted, mission relevant detection and tracking of small unmanned aircraft systems (sUAS), with line of bearing (LOB). As part of the Titan C-UAS™ portfolio of products, Titan-SV LOB excels at long-range 360° detection of commercial (consumer/prosumer), DIY, and tactical sUAS transmitters, incorporating proven interoperability with commercial and government multi-sensor c-UAS platforms.

sUAS Tracking with Line of Bearing

TITAN

_Key Features

- > Precision 3D tracking of many sUAS platforms
- > 1° Azimuth and Elevation tracking of non-precision sUAS platforms
- > Multi-resource hardware architecture for maximum scanning and detection performance
- > Expansive software-defined library that includes detection capabilities of commercial (consumer/prosumer), DIY, and tactical sUAS transmitters
- > High probability of detection with low false alarm rates
- > Internally integrated position and heading sensors to expedite fielding and vehicle operations

_TITAN-SV LOB Interoperability and Integration

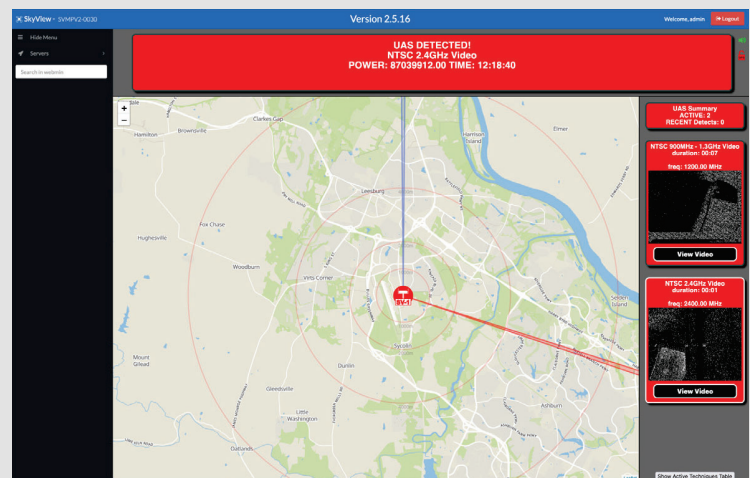
- > Proven interoperability with commercial and government multi-sensor c-UAS
- > Secure Application Programming Interface (API) to support integration of TITAN-SV DIVR sensors into comprehensive c-UAS suites
- > Native integration with special operations electronic warfare systems for auto-triggered or man-in-the-loop c-UAS mitigation
- > Plug and Play compatibility with BlueSky 2" mast systems

_TITAN-SV SOSA MOSA

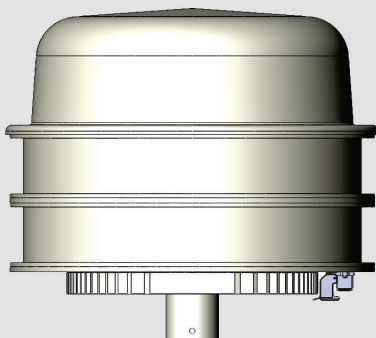
- > Product in development
- > Titan SV capability on a card with single board computing and software
- > Element in 6u VPX chassis
- > Offers Titan and Titan SV detect capability as software only acquisitions
- > Option for vehicle-borne or quasi-static c-UAS systems.

_Specifications

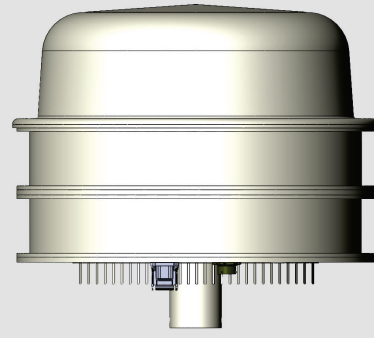
DIMENSIONS	> Primary Sensor 17.7" x 17.7" x 15.6" (13.1" height over mast)
WEIGHT	> ~37 lbs
POWER	> DCV 10V-35V, 160W



TITAN-SV LOB INTERFACE



TITAN-SV LOB SIDE 1



TITAN-SV LOB SIDE 2